

# Rockgrinders Gazette



**ADDRESS:** Lot 1 Bensley Road, Hazlett Oval  
Macquarie Fields NSW 2564  
**MAIL:** PO Box 477, Ingleburn NSW 1890  
**EMAIL:** ctownlapidaryclub@bigpond.com  
**WEBSITE:** campbelltownlapidary.org.au  
**PHONE:** (02) 9618 3206

## Club Rooms Opening Hours

Monday	9 am till 1 pm
Wednesday	9 am till 1 pm
Friday	5 pm till 9 pm
Saturday	9 am till 1 pm

March 2022 – Aquamarine/Bloodstone

## What's in the newsletter?

What's in the newsletter?	1
New members are welcome	1
From the President	1
Smile Time	2
Psychic Daughter	2
Hints and Tips	3
The Micro Mini Butane Torch	3
Filling a Butane Torch:	3
Turning on the Torch	3
Understanding the Flame:	3
March Birthdays – Aquamarine/Bloodstone .	4
Aquamarine	4
Bloodstone	4
What's On .... Or Not ?	5

## New members are welcome

Are you interested in: Lapidary, Fossils, Gems, Crystals, Beading, Silver Smithing or Lost wax casting in a relaxed and friendly environment?

Call into the Club on Wednesdays or Saturdays (9 am – 1 pm), or better still, call in on Open Day 19 March between 9 am and 2 pm, and someone can show you around and answer all your questions. Alternatively, you could give us a call on 9618 3206 and leave your details. Someone will get back to you in the very near future.

Looking forward to meeting some new members soon.

Fees and Charges Table (per year)			
Single	Family	Pensioner Family	Pensioner/Junior/Student
\$15.00	\$20.00	\$15.00	\$10.00
<b>Insurance:</b> \$5.00 per member			
<b>Workshop/Day fee:</b> \$3.00 per session			
<b>Joining fee:</b> \$10.00 (once only on joining club)			
<b>NOTE:</b> You must be an insured member over 12 years of age to use machinery & cutting implements			

## From the President

It is wonderful to have the club open again after our last Covid 19 closure. It is going to take time to get our club back up to full strength again, we face many challenges.

Due to family illness and the tragic loss a beloved duty officer we can only open the club on Wednesdays and Saturdays. Even these opening days are a strain on our remaining Duty Officers.

Being closed for the best part of two years has meant that we haven't had the natural flow of new members to take up positions. Many other clubs are in the same position. So, we need to work hard together to start rebuilding our club, both financially and operationally. If you have the time and commitment and would like to be trained as a duty officer, please contact us as I would really love to get the club open again on another day. This club is too precious to lose.

Our Open Day is on Saturday 19<sup>th</sup> March. A number of people have stepped forward to help with the Open Day, but we need more help. This event is critical to the continued success of the club.

We need help with getting the tables and chairs set up on Saturday morning, the club gazebo and stall set up, and assistance putting out the signs that go out on the morning. If you can help out, turn up at the Club around (or as soon as possible after) 7.30 am on Open Day, and let someone know you are there to lend a hand. It will be much appreciated.

We also need cakes and slices to sell at the canteen during the day. If you can help out with the canteen please contact Judy.

Thank you to our club members who attended Ray Jones' funeral last month. It was a wonderful show of support from the club to Penny and her family in their time of grief.

On a very sad note, our wonderful club Treasurer, Duty Officer and organiser of all things lapidary club has not been able to be with us much as she is looking after her husband Ron. Ron is very unwell and Margaret must spend her time with him. Our thoughts and prayers go out to Margaret and Ron at this sad time.

Suzy Brandstater  
President

## OPEN DAY Saturday 19<sup>th</sup> March 2022

Open day is important to our club as it allows the public to find out about us, allows members to sell their items and provides money for our club equipment so please help.

We have a list of jobs that we need help with on the club notice board, **please add your name to the list. If more information is needed please ask the Duty Officer.**

### Volunteers required from 7.30 am

We need volunteers for:

- 🕒 Cleaning prior to day
- 🕒 Club Stall help setting up & putting away
- 🕒 Canteen helpers including donations of cakes/slices for sale
- 🕒 Cleaning at end of day
- 🕒 General Setting Up & spreading the word.

**Please help!**

## Smile Time

### Psychic Daughter

Bill is putting his young daughter to bed one night and as he walks out the bedroom door he hears her saying her prayers. She says, "God bless mommy, daddy, and grandma, rest in peace grandpa."

Bill rushes back into her bedroom and asks her, "Why did you say the last part?" His daughter replies, "Because I needed to." The next day, grandpa dies of a heart attack. Bill is worried about his daughter but thinks, "It must just be a sad coincidence."

That night he tucks his daughter into bed again and once again he hears her saying her prayers. She says, "God bless mommy and daddy, rest in peace grandma."

Bill is now really worried and thinking to himself, "Can my daughter really see into the future?" The next day, grandma dies and now Bill is convinced his daughter can predict the future.

For the rest of the week nothing happens, but on the Sunday night as Bill leaves his daughter's bedroom he waits outside and listens for any more prayers.

Sure enough, he hears her say, "God bless you mommy, rest in peace daddy." Now Bill is really panicking and thinking, "Oh God, I'm going to die tomorrow!"

The following day Bill is in a complete mess all day in work; a real nervous wreck. He constantly checks the clock, looks around the room and is on edge all the time expecting to die at any moment.

He is so nervous that he doesn't leave the office until it's past midnight. Once it turns midnight he says to himself with relief, "How is this possible? I should be dead!"

He goes home and walks into the house to find his wife sitting on the sofa with a scared look on her face. She asks him, "Where have you been? What took you so long?"

Bill replies, "Listen honey, today I haven't had the best of days" and he is just about to tell her what has happened when she starts crying and bursts out, "I saw the mailman die yesterday!"

My wife didn't believe I could make a car out of spaghetti.

You should have seen her face when I drove pasta.

## Words of Wisdom

"I've learned that people will forget what you said, people will forget what you did, but people will never forget how you made them feel." -*Maya Angelou*

## Hints and Tips

(<https://workingsilver.com/resource-types/tool-demonstrations/>)

**The Micro Mini Butane Torch** is a must have on your soldering bench for small jobs.

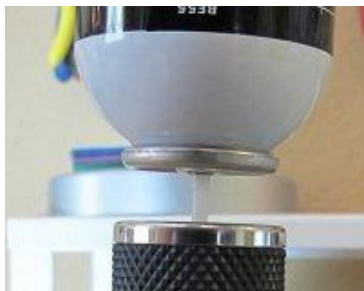
The micro mini butane torch is great for:

- soldering jump rings closed (14g and thinner)
- soldering thin (4mm and smaller) ring bands
- soldering bezels closed
- drawing a bead on a wire to make head pins
- making a heat patina on a metal surface
- soldering a small element or charm on a metal pendant (1" and smaller)
- torch-firing some types of metal clay



### Filling a Butane Torch:

A butane torch isn't much good unless it is filled with fuel. Use regular, good quality butane fuel purchased from any hardware store. You may have heard that it is best to use "triple-refined" fuel to keep your torch head clean, but honestly most of the time I use regular fuel right off the shelf, and my torches work great. This is not an endorsement, just my experience.



With practice, you will get use to filling your butane torch.

- 1 Grab your torch and butane canister and go outside (You want to have adequate ventilation when you are filling the torch).
- 2 If your torch has a stand at the bottom that can be removed, go ahead and take it off and put it aside.
- 3 Remove the cap from the butane.
- 4 Turn the torch upside down. You'll see a filling point on the bottom of the torch. Insert the tip of the butane canister and press down firmly.

The butane will flow from the canister into the torch. If you hear fuel escaping out the torch head during filling, stop and tighten the knob that regulates the butane flow. Fill the torch until the butane makes a slight spitting noise at the filling point (about a 10 count). Then replace the stand on the torch, stand it upright, and let

the butane settle for about 30 seconds or so. Store my butane canister away from your soldering area.

### Turning on the Torch:

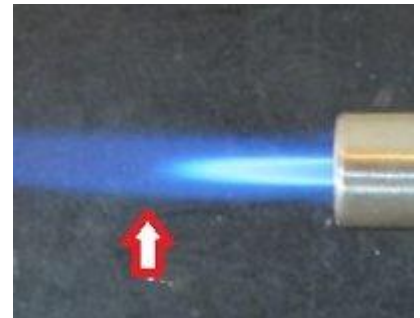
Consult the directions that came with your particular torch for directions on how to turn on your exact torch, but there are some basic concepts that apply to all micro butane torches:

Ensure that your soldering area has a fireproof surface and put on a pair of safety glasses before turning on your torch. Point the head of the torch about 8 to 10 inches above that surface at a 45-degree angle and turn on the torch by starting the butane flow and clicking the ignition button. Adjust the flame to its highest point then to its lowest (usually a lever or knob) to get the feel of the size of the flame.

### Understanding the Flame:

Now examine the flame itself. (Sometimes it's best to view it under dimmed light.) You'll see an inner and outer flame.

The outer flame is a dark transparent blue. The inner flame is lighter and more opaque in color and comes to a sharp tip inside the outer flame. Just in front of that lighter flame is the "sweet spot" or the hottest part of the flame and the point to quickly heat metal and flow solder. You'll move this tip up close or farther away from the surface of the metal to control the rate of heat on the metal.



If you move the flame too close to the surface, you will hear a sound that resembles wind or a slight hiss and see a dark spot in the middle of the heated metal. You have gone beyond the sweet spot of the flame. The inside part of the inner flame is cooler, which means it will take longer to solder your pieces.

After you are done examining the flame, turn the torch off. Place the torch upright on the fireproof surface. Remember that the tip will be hot, so point it away from you.

Congratulations! You have conquered the first steps using a butane torch. Let me also recommend, as with any complex jewellery tool, to get out the instructions that came with your torch and read them. There is a wealth of information on that piece of paper!

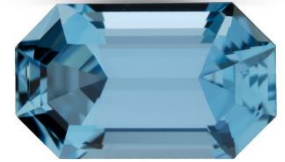
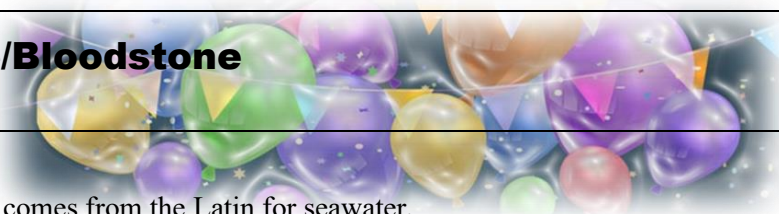
## March Birthdays – Aquamarine/Bloodstone

### Happy Birthday to:

Joshua Smith  
Zara Whiteacre  
Maria Whiteacre  
Dane Taylor  
Lahoune (Leon) Douangdar  
Tom Hopson

### Aquamarine

Aquamarine’s name comes from the Latin for seawater, and ancient mariners claimed the gem would calm waves and keep sailors safe at sea. This March birthstone was also thought to bring happiness in marriage. Beryl was believed to give the wearer protection against foes in battle and litigation. It was also thought to make the wearer unconquerable and amiable, and to quicken the intellect.



Aquamarine is not only the birthstone for March, but the gem is also given as a present on the 19th wedding anniversary. As for famous ones, in 1936 the government of Brazil gave First Lady Eleanor Roosevelt a dark blue rectangular step cut aquamarine that weighed 1,298 carats (ct) (pictured right). It was the larger of two stones faceted from a piece of aquamarine rough that itself weighed an impressive 2.9 pounds (1.3 kilograms). It is now housed at the Franklin D. Roosevelt Presidential Library and Museum in Hyde Park, New York. A celebrated attraction at the Smithsonian Institution is the 10,363 ct (about 4.6 pounds) Dom Pedro Aquamarine – believed to be the largest faceted aquamarine in the world. The approximately 14 inch (36 centimetre) high obelisk was fashioned by acclaimed German lapidary Berndt Munsteiner using the fantasy cut technique.

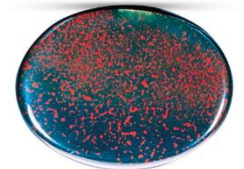


GIA.ec

With a hardness of 7.5–8 on the Mohs scale, this March birthstone is durable enough for everyday wear. Caring for the gem is easy. Use warm water, mild dish soap and a toothbrush to scrub behind the birthstone where dirt can collect. Ultrasonic cleaners and steam cleaning are usually safe options as long as there are no fractures or liquid inclusions in the gem.

### Bloodstone

Bloodstone, also known as heliotrope, is a variety of chalcedony (cryptocrystalline quartz) that is traditionally semi-translucent to opaque dark green jasper with red inclusions of iron oxides, especially hematite. Bloodstone’s alternate name heliotrope comes from the ancient Greek word that means “to turn the sun.” In ancient times, these March birthstones were believed to turn the sun red if they were placed in water. The name bloodstone derives from the belief by some that the colour pattern has religious significance, representing the blood of Christ.

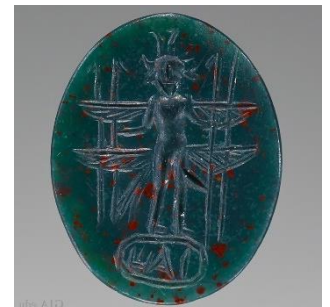


Several metaphysical properties have been attributed to this March birthstone. They include increasing strength, giving invisibility, and preserving health and youth. In modern times, many believe the bloodstone birthstone to be a lucky charm, as it is prized by athletes and others who want to grow their strength. Even today in India, fine bloodstones may be crushed into a powder and used as an aphrodisiac.

Although bloodstone does not share the same beauty as the aquamarine March birthstone, many prize bloodstone for its special properties. Bloodstones used as gems are typically cut as cabochons, though some striking examples are faceted.

Your bloodstone birthstone can be easily cleaned at home with warm soapy water and a soft brush. It is important to keep your bloodstone away from harsh chemicals and extremely hot temperatures. Dry off this March birthstone with a clean, soft cloth. To keep the stone from getting scratched (it’s 6.5–7 on the Mohs scale), it is important to store your bloodstone birthstone in a soft fabric.

<https://www.gia.edu/birthstones/march-birthstones>



One of the ninety engraved gems, cameos and bullae from the Roman Empire. Courtesy: The J. Paul Getty Museum.


## What's On .... Or Not ?

Events are generally from the Gem and Lapidary Council of NSW <http://www.gemlapidarycouncilnsw.org.au/events/>  
 Other contributions or back issue requests may be made to [ctownlapidaryclub.editor@gmail.com](mailto:ctownlapidaryclub.editor@gmail.com).  
 Alternately, download back issues from the Club's website, . <http://www.campbelltownlapidary.org.au/>.  
 We are grateful for any and all submissions.

WHEN	WHAT	WHERE
<b><i>Please note</i></b> all events are subject to rules and restrictions relating to Covid-19 pandemic.		
11 -13 March 2022	<b>Minerama, Glen Innes</b> <i>Fossicking Gem &amp; Jewellery Show</i>	For more info: <a href="https://www.minerama.com.au">https://www.minerama.com.au</a>
Sat 12 – Mon 14 March 2022	<b>Canberra Lapidary Club</b> <i>2022 Rock Swap</i> Entry Free	<b>Venue:</b> Exhibition Park (EPIC) Parrot Park Sales Fossickers & dealers selling : Minerals, crystals, jewellery, rough & cut gemstones, opals, fossils. Food Available  Other * Sieve for Sapphires * Pan for Gold <b>See Flyer attached</b>
19 March 2022	<b>Campbelltown District Lapidary Club</b> <i>Open Day</i> Time: 9 am – 2 pm Entry: Free	<b>Venue:</b> Lot 1 Bensley Road, Macquarie Fields <ul style="list-style-type: none"> <li>• Crystals, gems, roughs, minerals</li> <li>• Handcrafted jewellery, and market stalls,</li> <li>• Readers, Reiki,</li> <li>• Tasty Greek treats, cold drinks</li> </ul>
19 – 20 March 2022	<b>New England Lapidary and Fossicking Club Inc</b> <i>31<sup>st</sup> Annual Gem and Craft Show</i> Time: 9 am – 5 pm Saturday 9 am – 3 pm Sunday Entry: Free	<b>Venue:</b> Armidale Show Ground For more info phone: Mick on 6778 5122 or Jenny on 0407 222 425, or email: <a href="mailto:nelfc@hotmail.com">nelfc@hotmail.com</a> <b>See Flyer attached</b>
20 March, 2022	<b>Illawarra Lapidary Club Inc –</b> <i>Rock Swap</i> Time: 8 am – 2 pm	<b>Venue:</b> Stuart Park, George Hanley Drive, North Wollongong. Stalls selling crystals, minerals, fossils, jewellery, equipment and books. Come along for a great day.  <b>More info</b> at: <a href="http://www.illawarralapidaryclub.com.au/">http://www.illawarralapidaryclub.com.au/</a> or like us on Facebook <b>See Flyer attached</b>

Have fun, take care and stay safe!

 <p><b>2022 Gem Shows</b>  <b>Canberra Lapidary Club Inc.</b>                  Web : <a href="http://www.canberralapidary.org.au">www.canberralapidary.org.au</a>                  Email : <a href="mailto:canberralapidary@gmail.com">canberralapidary@gmail.com</a>                  Ph : 02 6260 5322 (Workshop)</p>		
<b>Rock Swap</b>		
<b>Date</b>	<b>Sat 12 - Sun 13 - Mon 14</b> March 2022	
<b>Venue</b>	Exhibition Park (EPIC) – <b>Parrot Park</b>	
<b>Entry</b>	<b>Free</b>	
<b>Sales</b>	<b>Fossickers &amp; dealers selling :</b> Minerals, crystals, jewellery, rough & cut gemstones, opals, fossils. <b>Food Available</b>	
<b>Other</b>	* Sieve for Sapphires      * Pan for Gold	
<b>Winter &amp; Spring</b>		
<b>Gemcraft &amp; Mineral Shows</b>		
<b>Winter Show :</b>	Sat 21 May Sun 22 May	10am to 5pm 10am to 4pm
<b>Spring Show :</b>	Sat 29 Oct Sun 30 Oct	10am to 5pm 10am to 4pm
<b>Venue</b>	Exhibition Park (EPIC) - Mallee Pavilion	
<b>Entry</b>	<b>\$7</b> Adults <b>\$12</b> Family <b>\$4</b> Concession <b>Free</b> Children to Age 16	
<b>Sales</b>	<b>Gem, Mineral, Jewellery &amp; Lapidary dealers</b> Minerals, fossils, jewellery, rough & cut gemstones, crystals, opals, beads. <b>Food available</b>	
<b>Other</b>	Displays of members' collections. Demonstrations of cabbing & faceting. Age of Fishes Museum – Information & Fossil Exhibits	



**New England Lapidary**  
and  
**Fossicking Club inc.**

**31st ANNUAL GEM AND CRAFT SHOW**  
**ARMIDALE SHOWGROUND**


**Saturday March 19th 2022 9am - 5pm**  
**Sunday March 20th 2022 9am - 3pm**

See a spectacular array of:  
**Gems, Rocks, Crystals, Jewellery, Crafts**  
**Beads & Lapidary Books/Supplies/Equipment**  
**and much more**  
*All on sale at the show*

Raffle Tickets \$1.00 Great prizes  
 B.B.Q Breakfast & Lunch/Light Refreshments Available

**FREE ENTRY**

Phone: Mick....67785122  
 Phone: Jenni....0407222425  
 email: [nelfc@hotmail.com](mailto:nelfc@hotmail.com)



**ILLAWARRA LAPIDARY CLUB INC**

**ROCK SWAP**

**Sunday 20<sup>th</sup> March, 2022**  
**Stuart Park, North Wollongong**  
**8 am to 2 pm**

**Stalls selling**  
**Crystals, Minerals, Fossils,**  
**and Jewellery**  
**Equipment and Books**

Covid-13 Plan will be in place  
 see Website for details  
<https://www.illawarralapidaryclub.com/covid-13/>

