

# Rockgrinders Gazette



**ADDRESS:** Lot 1 Bensley Road Macquarie Fields NSW 2564  
**MAIL:** PO Box 477 Ingleburn NSW 1890  
**EMAIL:** ctownlapidaryclub@bigpond.com  
**WEBSITE:** campbelltownlapidary.org.au  
**PHONE:** (02) 9618 3206

## Club rooms opening hours

Monday 9am till 1pm  
Wednesday 9am till 1pm  
Friday 6pm till 9pm  
Saturday 9am till 1pm

July 2017 Ruby Edition

## New members welcome

Interested in: Lapidary, Fossils, Gems, Crystals, Beading, Silversmithing or Lost wax casting in a relaxed friendly environment? Pop in and have a chat.

To all new members, we trust you will enjoy your experiences with us and benefit from our classes. If you have any questions there is a duty officer who will assist you. All members would also love to help you if they can.

### Membership

Single	\$15.00
Family	\$20.00
Pensioner Family	\$15.00
Pensioner / Student	\$10.00
Insurance	\$5.00 per member
Workshop fees	\$2.00
Joining Fee	\$10.00

**NOTE:** You must be an insured member over 12 years of age to use machinery & cutting implements

All visitors are welcome however only members can use machines or gas.

### Membership is due 1st July

*If you are not financial, you cannot use the equipment.*

## Silver Classes

Silver Casting Classes are now in recess. Barry and Dorothy will be happy to help you when classes resume in September.

## Display cases for the exhibition

Each year we exhibit our members work in display cases at our exhibition. A limited number of these cases are available to members. If you would like to book one of these please write your name on the list on our noticeboard.

Please write your name down on the list at the club so that we know how many display cases to allow for.

## Exhibition 2017

**Its nearly here!** The exhibition will be held at the Greg Percival Community Centre Ingleburn on the weekend of the 8th and 9th of July. There are many jobs to be done to make this a successful exhibition. Setting up on Friday afternoon and packing up on Sunday. Other jobs to do on the days of the exhibition are the children's table, catering, general assistance - to name a few. We particularly need people to help with the kitchen. You don't have to be there all weekend, but if you can help us with putting in a couple of hours in the kitchen/catering or helping at the children's table, we would greatly appreciate it. Please add your name to the list on the noticeboard.

## Donations still needed!

What have you donated to club sales?

It is an expectation that all club members donate an item for club sales or the raffle. If you have anything lapidary related that you can donate we would appreciate it. We are particularly after good rough and polished stones. A big thank you to everyone who has already donated.

All donations to be given to Carolina.

## July Workshop - 9.30am 22/7/17

### Earring Making Workshop

Learn how to make earrings.

We will be making earrings for club sales. The workshops is free if you want to make them for the club or \$10 if you want to keep what you make. All tools, beads and findings supplied. But if you have your own jewellery making tools, please bring them along. Some examples of what you could make.



## Gemstone of the Month - Apophyllite

Apophyllite is a beautiful hydrated Silicate mineral whose name roughly means "to leaf apart" in Greek. It was given its name because crystals tend to peel or flake apart when they are heated due to the loss of water molecules.

*Apophyllite is not a mineral!* Apophyllite is a general term for three minerals that are similar in their chemistry and physical properties. The name apophyllite refers to a specific group of phyllosilicates, a class of minerals. These minerals include the members Fluorapophyllite-(KOH), Natroapophyllite -(Na), Hydroxyapophyllite-(K).

Apophyllites are beautiful and widely collected crystals which are often found in clusters and often growing next to or combined with Stilbite or other Zeolite minerals. Some are clear in colour and are sometimes mistaken for Quartz. What sets Apophyllite apart, though, is this crystal's strong reflective surface which is due to its unique micaceous (shiny, like Mica) pearly base. This pearlescent lustre at the base makes the rest of the crystal appear mirror-like when viewed from a certain angle. There is also a marked crystal clear water-like quality to Apophyllite's appearance. The crystals actually do contain an abundance of water molecules. The internal structure of these crystals is also quite distinctive, containing a three-dimensional interconnected four and eight-member ring structure unique to the Apophyllites. The open cavities within the crystal structure are what hold the traces of water and other elements, and each is interconnected by channels running the entire length of the crystal. These channels, which are open at the crystal's surface, allow electrically charged atoms (ions) to move freely within the crystal. They also allow Apophyllite to physically capture and exchange ions.

Apophyllite crystals form in two different ways – one, the elongated rectangular prism capped off with a four-sided pyramid point or, two, a pseudo cubic crystal with no pyramid top that makes it look square and blocky. (Other forms of Apophyllite are found in druses or masses, or more rarely in tabular form). Being Igneous, Apophyllites are born during volcanic activity where, as the magma cools, air bubbles get trapped and form a cavity within which the crystals begin to grow. So, the best places to find Apophyllites are in Basalt and ancient lava flows, most prominently in the Watchung Mountain area of northern New Jersey, the Bay of Fundy area in Nova Scotia Canada, Iceland, Greenland, and the best green varieties coming out of India.

### Mineral Information

Formula  $\text{KCa}_4(\text{Si}_4\text{O}_{10})_2\text{F}_8(\text{H}_2\text{O})$

Crystal System Tetragonal

Crystal Habit

Crystalline - Coarse, Pseudo Cubic, Massive

Cleavage Perfect

Lustre Vitreous - Pearly

Colour white, pink, green, yellow, violet

Streak white

Class Tetragonal - Ditetragonal Dipyramidal

Fracture Uneven

Hardness 4-5



### Spiritual Meaning

**Keywords:** Spiritual Connection, Meditation

Apophyllite is a crystal of facilitating and strengthening conscious, intended connection with the spiritual world. It is an energy stimulator that brings high crystal energy to mystical and other endeavours. It is used metaphysically to help one see the truth and then act on it.

In traditional folk and crystal healing, Apophyllite is used for tired or stressed eyes by placing on the eyelids. It is used similarly in different body regions for respiratory problems, stopping asthma attacks, allergies, and health of mucus membranes and skin.

## Exhibition Raffle Prizes

**1st Prize.** Solid Sterling Silver & Opal pendant on a solid sterling silver chain (donated by the Bryant, Cohen & Cordova Families)

**2nd Prize.** Clock & Pen set donated by Tim Twomey

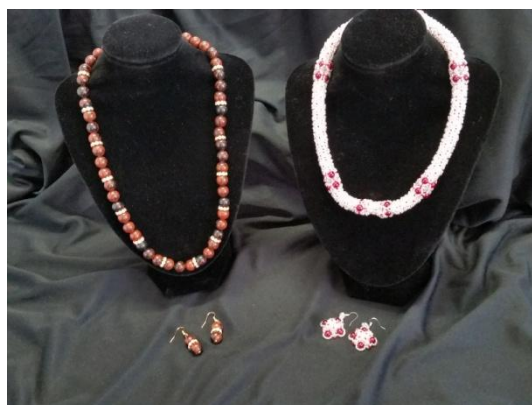
**3rd Prize.** Sterling silver handmade chain mail bracelet Donated by the Dean family

**4th Prize.** Stone Sphere on stand Donated by Anita Allen

### Lucky Door Prizes

1. Mahogany obsidian handmade necklace and earrings Donated by Suzy Brandstater

2. Handmade web weave beaded necklace and earring set Donated by Margaret Aitken



## Brad Smith's Bench Tips

### Fancy Rivet Heads

For a nice looking rivet head, use brass escutcheon pins. You'll have perfectly rounded heads that are all the same size and shape. The pins are a little hard to find, so try the best hardware stores first. Be sure to get solid brass pins, not brass plated steel. If unsure, test them with a magnet. The pins are readily available online. Lee Valley Tools has them in 14 - 18 gauge and lengths from 1/4 inch to 1 inch. Go to <http://www.LeeValley.com> and do an item search on "brass escutcheon pin"



For best results, select a drill that gives you a hole with a close fit to the rivet. Trim the rivet to a leave a little less than one diameter sticking out the back side. Place the head on a scrap of hard plastic on the anvil so as to not flatten the head. I prefer a ball peen hammer (with a small 3/8 inch ball) for setting the rivet.

### Easier Prong Setting

When setting stones in a prong mount, the tool is less likely to slip off the prong if you grind a groove into its face or rough up the face a bit with sandpaper. Some folks prefer a prong pusher for doing this, and others like a set of pliers.

The easiest way to create a slot on the pusher is with a file, and the easiest way to create a slot on one jaw of your pliers is with a cutoff wheel. Then rough polish the slot with a medium grit, knife-edge silicone wheel.

*See all Brad's jewelry books at [Amazon.com/author/bradfordsmith](http://Amazon.com/author/bradfordsmith)*

### July (Ruby) Birthdays

Michael Harley  
Simon Hoare  
Janet Klepatski  
Lachlan Watts  
Milagros Talmage

Amanda Hanson  
Matthew Jones  
Lil Klepser  
Dianne Jackson  
Margaret Raisbeck

Jimmy Hadely  
Amanda Duncan  
Ralh Jasmine  
Jocelyn Parker-Ricketts



## What's On

Events are generally from the Gem and Lapidary Council of NSW

<http://www.gemlapidarycouncilnsw.org.au/events.html>

Other contributions can be made via email to the club [ctownlapidaryclub@bigpond.com](mailto:ctownlapidaryclub@bigpond.com).

We are grateful for any submissions

WHEN	WHAT	WHERE
<b><u>Saturday 8th and Sunday 9th July 2017</u></b>	<b>Campbelltown Districts Lapidary Club Annual Exhibition</b> <b>Two huge rooms filled with gemstones, rough and jewellery. Free children's' activity</b>	Greg Percival Community Centre Ingleburn Cnr of Oxford Rd and Cumberland Rd, Ingleburn NSW 2565
<b><u>Saturday 19th – Sunday August 20th 2017</u></b>	<b>Blaxland Gem &amp; Mineral Club Gem Show</b> 8 am to 4 pm Daily Displays of lapidary work and gem, mineral and crystal sales. Refreshments available. Entry: Adults: \$3 Children \$1	Glenbrook Community Hall Great Western Highway, Glenbrook, NSW Just west of Information Centre, next to Glenbrook Theatre
<b>Sat 26th -Sun 27th August</b>	<b>White Cliffs Gem Fest and Car Boot Sale</b>	
<b><u>Sat 30 Sep – Mon 2 Oct 2017</u></b>	<b>GEMKHANA 2017</b> The annual NSW state gem and lapidary show	<b>Venue:</b> Hawkesbury District Agricultural Showgrounds Clarendon NSW
<b><u>Saturday 14th October</u></b>	<b>Campbelltown Lapidary Club Open Day</b> <b>Gemstones, jewellery, rough</b> <b>Come into the club and have a look around</b> <b>Sausage sizzle, cakes, slices and Greek delights on sale</b>	Lot 1 Bensley rd Macquarie Fields
<b><u>Sat 28 – Sun 29 October 2017</u></b>	<b>Lapidary Club of NSW Inc Annual Show</b> The Club's annual exhibition of members' lapidary work, with books, jewellery, mineral specimens, rough and polished gems, fossils and crystals available for sale.	At Lapidary House, 136 Reservoir St Surry Hills
<b><u>Sat 4 – Sun 5 Nov 2017</u></b>	<b>Illawarra Lapidary Club Inc Jewellery, Gems &amp; Minerals Festival</b> <b>Times:</b> Saturday 9.00am to 4.00pm and Sunday 9.00am to 2.30pm	<b>Venue:</b> Heining House, Ribbonwood Centre, Princes Highway, Dapto, NSW 2530 (15km south of Wollongong),
<b><u>Sat 4 – Sun 5 Nov 2017</u></b>	<b>Canberra Lapidary Club Spring Gemcraft &amp; Mineral Show</b> <b>Time :</b> 10.00am to 5.00pm <b>Cost :</b> \$5 adults, \$10 family, \$2 children/concession <b>Details :</b> Gem, Mineral, Jewellery & Lapidary dealers. Minerals, fossils, jewellery, rough & cut gemstones, lapidary equipment & supplies, opals, beads & supplies. Food available. Displays of members' collections, demonstrations of cabbing, faceting & jewellery making.	<b>Venue :</b> Exhibition Park in Canberra – Mallee Pavilion (indoor) <a href="http://www.canberralapidary.org.au/">http://www.canberralapidary.org.au/</a>

Missed out on the last newsletter?

Contact [suzybrandstater@hotmail.com](mailto:suzybrandstater@hotmail.com) and it will be emailed to you.

### Reminder

A general reminder to all members who use the workshop. It is really important to look after the equipment. It is expensive and if used incorrectly or not cleaned up after use, can be damaged and rendered unusable. Wash your hands and your stones thoroughly before moving to the next wheel (don't just dunk them quickly under the tap). Clean your machine after use. If something breaks or isn't working properly, report it immediately to the duty officer.