

# Rockrinders Gazette



**ADDRESS:** Lot 1 Bensley Road Macquarie Fields NSW 2564  
**MAIL:** PO Box 477 Ingleburn NSW 1890  
**EMAIL:** ctownlapidaryclub@bigpond.com  
**WEBSITE:** campbelltownlapidary.org.au  
**PHONE:** (02) 9618 3206

## Club rooms opening hours

Monday	9am till 1pm
Wednesday	9am till 1pm
Friday	6pm till 9pm
Saturday	9am till 1pm

August 2017 Peridot Edition

## New members welcome

Interested in: Lapidary, Fossils, Gems, Crystals, Beading, Silversmithing or Lost wax casting in a relaxed friendly environment? Pop in and have a chat.

To all new members, we trust you will enjoy your experiences with us and benefit from our classes. If you have any questions there is a duty officer who will assist you. All members would also love to help you if they can.

### Membership

Single	\$15.00
Family	\$20.00
Pensioner Family	\$15.00
Pensioner / Student	\$10.00
Insurance	\$5.00 per member
Workshop fees	\$2.00
Joining Fee	\$10.00

**NOTE:** You must be an insured member over 12 years of age to use machinery & cutting implements

All visitors are welcome however only members can use machines or gas.

### Membership was due 1st July

*If you are not financial, you cannot use the equipment.*

## Silver Classes

Silver Casting Classes are now in recess. Barry and Dorothy will be happy to help you when classes resume in September.

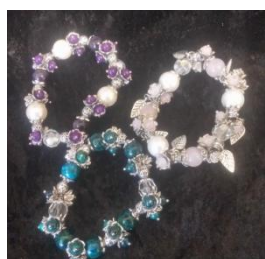
## August Workshop - 9.30am 26/08/17

### Ornate Bracelet

Cost \$15

Learn how to make an ornate bracelet.

All tools, beads and findings supplied. But if you have your own jewellery making tools, please bring them along.



## ANNUAL GENERAL MEETING.

### Saturday 2nd September 9.30am

The time has come for you to consider who you want to run the Club for the next 12 months.

The Annual General Meeting (AGM) is to be held immediately after the September General Meeting.

At the AGM all elected members of the Management Committee will be required to stand down and their positions will be declared vacant. The election of a new committee will then be held. Some existing members will be eligible to re-nominate for their vacated position and others under the Constitution will not be eligible to re-nominate for their vacated position. However they may nominate for other positions.

You as a member of the club will be required to elect the following:-

- 1) PRESIDENT
- 2) VICE PRESIDENT (x2)
- 3) TREASURER
- 4) SECRETARY
- 5) MINUTE SECRETARY
- 6) ORDINARY COMMITTEE MEMBERS (x4)

The above forms the Management Committee.

Please consider running for a rewarding position on the Management Committee. You will receive all the help to assist you.

THE CLUB CANNOT RUN WITHOUT MANAGEMENT COMMITTEE AND FAIR TRADING LAWS WON'T ALLOW IT.

Nominations forms will be available after the August General Meeting and also there will a Nomination Form on the Notice Board. All nomination forms, to be eligible, will have to be submitted to the Secretary not less than 7 days before the Annual General Meeting.

## Thank You

A big thank you to Tim and Bob for making a new cover for the Septic Tank. And, a congratulations to Carolina and Eugenio for finding an innovative use for the old cover.

### Gemstone of the Month - Moss Agate

Moss Agate is a clear to milky coloured chalcedony with dendrite inclusions of chlorite, hornblende, iron oxide or manganese. Moss agate can also be called Dendritic Agate. It is technically not an Agate, but a variety of Chalcedony. Agate has banding in it, but it is commonly known as Moss Agate. The inclusions are most commonly green, but they can also be black, brown or red. The colour of the inclusions is affected by the oxidation of the included minerals. The inclusions look like moss or ferns growing in the stone. The places to find Moss Agate are Brazil, China, India, Australia, Kazakhstan, Madagascar, Mexico, Mongolia, Namibia, Uruguay, Indonesia and the USA. The Moss agate mined from India is often referred to as 'Mocha stone', a name credited to its former transport method via the Arabian Harbor of Mocha.

Moss agate is ideal for just about any type of jewellery design imaginable, from pendants to everyday rings. Agate stone is very durable and resistant to typical daily wear and tear. Owing to its lack of cleavage, it is actually more durable than many of the 'harder' jewellery gemstones. Large sizes are readily available and very affordable, which makes agate stones a favourite for many jewellers.

The availability of free-form Moss Agate gemstones has sparked interest in using Moss agate for men's jewellery designs, as they provide an interesting tribal look that appeals to the preferences of many gentlemen. In addition to jewellery, many ornamental carvings are made with Moss Agate.

#### Mineral Information

<b>Chemical Formula:</b>	SiO <sub>2</sub> Silicon dioxide
<b>Crystal Structure:</b>	Hexagonal
<b>Colour:</b>	Colourless to whitish-gray
<b>Hardness:</b>	6.5 to 7 on the Moh's scale
<b>Refractive Index:</b>	1.530 to 1.540
<b>Density:</b>	2.59 to 2.67
<b>Cleavage:</b>	None
<b>Transparency:</b>	Translucent to opaque
<b>Double Refraction or Birefringence:</b>	Up to 0.004
<b>Lustre:</b>	Waxy to dull
<b>Fluorescence:</b>	Variable



#### Metaphysical Information

Moss Agate is called the stone of wealth, attracting abundance in all forms. In the workplace, it is said to draw new business and gradual expansion, increasing prosperity over time. Good for small businesses and the self-employed, and a fortifying crystal for financial institutions. Some people keep one near when working on tax returns, spread sheets or figures that will not add up, and one with bank papers to encourage savings.

It is also called the "Gardener's Stone", as it is said to bring health and vitality to plants. Gardeners put chunks of it in their gardens to assist with plant growth and protection. It has been used as a birthing stone, midwives give it to women, to give them strength and courage for the birth and to reduce pain and assist in delivery. It is a stone of new beginnings.

Moss Agate is considered to be extremely beneficial as a body strengthener in times of stress. Its steady energies can aid those who feel unstable or ungrounded. It is an excellent stone for convalescing after illness, or in recovery from addictions. It is said to enhance mental concentration, persistence and endurance, which makes it useful as an aid in physical exercise programs, therapies, or body building.

#### August (Peridot) Birthdays

Frankie Chan  
Anita Allen  
Elise Campbell  
Adam Fitzgerald

Caroline Dawson  
Jessica Symons  
Beverly McKenzie  
Darrin Toohey

Marieta McNaught  
Barry Perkins  
Rob Wallbank



## Father's Day Raffle

Our next fund raiser is a Father's Day raffle which will be drawn at the AGM on the 2nd of September.

**1st Prize:** A bucket of Sapphire wash from Billabong Blue

**2nd Prize:** A steak knife set

**3rd Prize:** A fossil slab containing Glossopteris leaves



## Brad Smith's Bench Tips

### Find The Balance Point



With odd-shaped pendants or earrings it's often difficult to find the right place to attach a bail or loop so that the piece is balanced and hangs straight. A quick way to make a tool for this is to modify a set of tweezers. Any set of tweezers will work. Spread the tips, sharpen them with a file, and bend the tips at a right angle to point towards each other. To use the tool suspend the pendant or earring between two sharp points to see how it will hang.

### Drill Breakage

Using a small drill is difficult for a beginner, especially if it is hand held in a flexshaft or Dremel. They are easily broken if you push too hard or if you tilt the drill while it's in the hole.

Most problems, however, are the result of buying cheap drills that suffer from poor

quality steel or inaccurately ground cutting edges. A good drill from jewelry supply companies is well worth the price.

Remember that drilling always goes easier with lubrication. A little wax or oil is all you need. Almost anything will work - Three and One, beeswax, mineral oil, injection wax, car oil, olive oil, or one of the commercial cutting waxes, or water. The lubricant helps to move chips out of the hole and reduces friction of the drill against the side of the hole, keeping the drill cooler.

*See all Brad's jewelry books at [Amazon.com/author/bradfordsmith](https://www.amazon.com/author/bradfordsmith)*



## Lightning Ridge Field Trip - 24/9/17 - 25/9/17

We will be spending the evenings of the 24th and 25th September at the Glengarry Hilton. Then moving onto Lightning Ridge to stay at the Wallangulla Hotel 26th September to 1st October. We will be travelling home on the 1st of October. We will be fossicking on the big Mullock heaps at the Grawin and doing some fossicking along the road. At Lightning Ridge we will be seeing some of the attractions and hopefully going out to the Cookoran Opal fields to have a look at Daryl's mine. There are a lot of things to see in the ridge if you aren't keen on fossicking. For more info email Suzy at [suzybrandstater@hotmail.com](mailto:suzybrandstater@hotmail.com) or text 0414574057. Book your accommodation at Glengarry Hilton ASAP as there are only a couple of rooms left.

## Trim Saws

We have been having some problems with the way the trim saws are being used. A trim saw is only to "trim your slab" It is **not** for making slabs. If you need to slab a rock, see the duty officer about using the slab saws. If you haven't been trained in the use of the slab saws, ask the duty officer to teach you. If you are trained in using the slab saw, just let the duty officer know you are using it.. We have a chart hanging above the phone which lets you know how much to pay for your cutting. If something goes wrong with a piece of equipment, immediately let the duty officer know.

Correct



Wrong



Even More Wrong (**never** put the guard up)



# The Exhibition

I can't thank all those wonderful members enough who went the extra mile to make our 39th Exhibition a great success. Thank you to all who supported our club with such enthusiasm.

So many members donated wonderful items for our club sales, with several members donating multiple quality items. Many thanks; to all who gave, far too many to name.

Special thanks to Carolina who worked tirelessly throughout the year to ensure our club stall had a great display of quality items and then worked on the stall for 3 days with her trusty helper Eugenio.

Thank you to Leanne who took a day off work to ensure the kitchen was supplied with food and items for the weekend. And thank you to all Leanne's lovely helpers who worked their tails off especially during the Saturday rush. And thank you to Marieta for organizing our beautiful flowers and looking after them up with such enthusiasm.

Thank you to Clarice for organising the children's activity, ensuring everything necessary was available. Thank you also to Clarice's helpers who supervised the activity with a smile and loads of help. This free activity was extremely popular this year; and it was great to see so many up and coming "rockies".

Thank you to Ray who organised the front table with ticket sales, lucky door tickets, raffle and membership enquiries. Ray also, as treasurer organised the cash floats and the banking and accounts after the event. Thank you also to Ray's helpers; it definitely was not a job for one person.

Thank you, to all those who helped with publicity. Leanne, for magazine ads and RSL screen ad & for printing free tickets.

Suzy, for radio and paid newspaper ads & to all the members who distributed our many flyers (designed by Suzy) everywhere. Special thanks to Ann & Greg who organised a digital street ad plus placed all our street signs (painted by Julie) on Friday and collected them again on Sunday. Greg also organised the extra tables we needed. Thank you to Robyn for our signs inside the hall & to Alison for placing and removing multiple posters in local shopping centres. Many thanks to Kathy for our web site ad, and to all those many people (some were not members, just good supporters) who promoted our event through Facebook & other areas.

Thank you to Tim for providing transport to and from Ingleburn for all our stock & display cases etc., and thank you to all our helpers who packed and loaded at the club on Friday, unloaded at the hall and helped set up Friday. They then turned up on Sunday to pack and take everything back to the club and put things away.

Thank you to Suzy and her helpers who set out all our electrical connections for our dealers and our exhibition cases. Our exhibition had a wonderful range of items this year with 10 cases entered by members, many thanks to all who participated.

This year we tried something new, a members table organized by Elizabeth. As this was the first year it was trial and error, but turned out great with 9 members participating and a large assortment of handmade items. Many thanks, to Elizabeth and all her helpers who worked on a roster to keep the stall manned/womaned. A special thank you, to Lil who despite her fall on Friday, turned up on Saturday and Sunday to help with the beading demonstration.

Thank you to all our new dealers, and to all our dealers who come back year after year, to support our Exhibition. Without all our volunteers who worked tirelessly with only a smile and a thank you; and without our wonderful supporting dealers, we would not be able to have a show and our club would not be able to provide the equipment needed throughout the year so a big thank you to everyone involved in this great show.

Last but not least Thank you to Bob Thompson, our patron, the very helpful hall caretakers and Campbelltown City Council for their continuing support.

See you all next year.

Many Thanks Margaret

*Campbelltown Lapidary Club – August Peridot Edition 2017*





## July Workshop

At the July workshop we learnt to make earrings. We made a number of different styles of earrings which were then donated to the club for club sales. Thank you to the members who participated in this workshop.



## What's On

Events are generally from the Gem and Lapidary Council of NSW

<http://www.gemplapidarycouncilnsw.org.au/events.html>

Other contributions can be made via email to the club [ctownlapidaryclub@bigpond.com](mailto:ctownlapidaryclub@bigpond.com).

We are grateful for any submissions

WHEN	WHAT	WHERE
<b><u>Saturday 19 – Sunday 20 August 2017</u></b>	<b>Blaxland Gem &amp; Mineral Club Gem Show</b> 8 am to 4 pm Daily. Displays of lapidary work and gem, mineral and crystal sales. Refreshments available. Entry: Adults: \$3 Children \$1	Glenbrook Community Hall Great Western Highway, Glenbrook, NSW. Just west of Information Centre, next to Glenbrook Theatre
<b>Sat 26th -Sun 27th August</b>	<b>White Cliffs Gem Fest and Car Boot Sale</b>	For more information: Jane Stevenson wcma2012@hotmail.com r 0429 601 870
<b><u>Sat 2nd September</u></b>	<b>Campbelltown Districts Lapidary Club AGM</b>	<b>Lot 1 Bensley Rd Macquarie Fields</b>
<b><u>23rd - 24th Sept 2017</u></b>	<b>Camden Crystal and Craft Festival</b> Entry: Adults \$5, Concession \$3	A H & I Hall Camden Showground
<b><u>23rd September</u></b>	<b>Hunter Valley Gemmology Club</b> Gem Show and Exhibition 9.30am - 3.00pm	<b>1 Maize St, East Maitland</b>
<b><u>24th September</u></b>	<b>Lightning Ridge Field Trip</b>	<b>Contact Suzy for details</b> <a href="mailto:suzybrandstater@hotmail.com">suzybrandstater@hotmail.com</a> or text 0414574057
<b><u>Sat 30 Sep – Mon 2 Oct 2017</u></b>	<b>GEMKHANA 2017</b> The annual NSW state gem and lapidary show	<b>Venue:</b> Hawkesbury District Agricultural Showgrounds Clarendon NSW
<b><u>Saturday 14th October</u></b>	<b>Campbelltown Lapidary Club Open Day</b> <b>Gemstones, jewellery, rough</b> <b>Come into the club and have a look around</b> <b>Sausage sizzle, cakes, slices and Greek delights on sale</b>	Lot 1 Bensley rd Macquarie Fields
<b><u>Sat 28 – Sun 29 October 2017</u></b>	<b>Lapidary Club of NSW Inc Annual Show</b> The Club's annual exhibition of members' lapidary work, with books, jewellery, mineral specimens, rough and polished gems, fossils and crystals available for sale.	At Lapidary House, 136 Reservoir St Surry Hills
<b><u>Sat 4 – Sun 5 Nov 2017</u></b>	<b>Illawarra Lapidary Club Inc Jewellery, Gems &amp; Minerals Festival</b> <b>Times:</b> Saturday 9.00am to 4.00pm and Sunday 9.00am to 2.30pm	<b>Venue:</b> Heininger House, Ribbonwood Centre, Princes Highway, Dapto, NSW 2530 (15km south of Wollongong),
<b><u>Sat 4 – Sun 5 Nov 2017</u></b>	<b>Illawarra Lapidary Club Inc Jewellery, Gems &amp; Minerals Festival</b> <b>Times:</b> Saturday 9.00am to 4.00pm and Sunday 9.00am to 2.30pm <b>Admission:</b> \$3.00; children under 12 years free.	<b>Venue:</b> Heininger House, Ribbonwood Centre, Princes Highway, Dapto, NSW 2530 (15km south of Wollongong),
<b><u>Sat 11 – Sun 12 Nov 2017</u></b>	<b>Canberra Lapidary Club Spring Gemcraft &amp; Mineral Show</b> <b>Time:</b> 10.00am to 5.00pm <b>Cost:</b> \$5 adults, \$10 family, \$2 children/concession <b>Details:</b> Gem, Mineral, Jewellery & Lapidary dealers.	<b>Venue:</b> Exhibition Park in Canberra – Mallee Pavilion (indoor) <a href="http://www.canberralapidary.org.au/">http://www.canberralapidary.org.au/</a>
<b><u>Sat 11 – Sun 12 Nov 2017</u></b>	<b>Newcastle Lapidary Club Gem and Jewellery Fair</b> <b>Time:</b> Saturday 9am to 4pm, Sunday 9am to 3pm Entry FREE, plenty of parking	<b>Venue:</b> Newcastle Basketball Stadium, 27 Young St Broadmeadow NSW (short walk from Broadmeadow railway station, new indoor venue.)

## Exhibition Raffle Prize Winners

**1st Prize.** Solid Sterling Silver & Opal pendant on a solid sterling silver chain (donated by the Bryant, Cohen & Cordova Families) Won by Rita

**2nd Prize.** Clock & Pen set donated by Tim Twomey. Won by Bev

**3rd Prize.** Sterling silver handmade chain mail bracelet Donated by the Dean family. Won By Richard

**4th Prize.** Stone Sphere on stand Donated by Anita Allen. Won by Sonia