

Rockgrinders Gazette



ADDRESS: Lot 1 Bensley Road Macquarie Fields NSW 2564
MAIL: PO Box 477 Ingleburn NSW 1890
EMAIL: ctownlapidaryclub@bigpond.com
WEBSITE: campbelltownlapidary.org.au
PHONE: (02) 9618 3206

Club rooms opening hours

Monday	9am till 1pm
Wednesday	9am till 1pm
Friday	6pm till 9pm
Saturday	9am till 1pm

September 2016 Sapphire Edition

New members welcome

Interested in: Lapidary, Fossils, Gems, Crystals, Beading, Silversmithing or Lost wax casting in a relaxed friendly environment? Pop in and have a chat.

To all new members, we trust you will enjoy your experiences with us and benefit from our classes. If you have any questions there is a duty officer who will assist you. All members would also love to help you if they can.

Membership

Single	\$15.00
Family	\$20.00
Pensioner Family	\$15.00
Pensioner / Student	\$10.00
Insurance	\$5.00 per member
Workshop fees	\$2.00
Joining Fee	\$10.00

NOTE: You must be an insured member over 12 years of age to use machinery & cutting implements

All visitors are welcome however only members can use machines or gas.

Membership is due 1st July

If you are not financial, you cannot use the equipment.

Remember: No pay, no play

Silver Classes

Silver Casting Classes are about to commence again. Investment is on Friday 16th September from 6.00pm - 9.00pm Barry and Dorothy are looking forward to seeing everyone.

September Workshop - 9.30am 24/5/16 Right Angle Weave Bracelet \$15

Bring your jewellery hand tools if you have any.

Campbelltown Lapidary Club



AGM

Saturday 3rd of September is our **Annual General Meeting**.

We will start proceedings at 9.00am with our regular monthly meeting. When it is finished, we will take a short break for a cuppa and then we will have our AGM. At the conclusion of the AGM, we will be putting on a free **sausage sizzle** for club members. This will give us a chance to relax and socialise and catch up with each other.

Looking forward to seeing everyone there.

Field Trip - Lightning Ridge 25/9/16 - 2/10/16

We will be travelling to the Grawin Opal Fields, staying at the Glengarry Hilton Sunday 25th and Monday 26th. Then on Monday afternoon travelling onto Lightning Ridge. I have booked my accommodation at the Glengarry Hilton, they have very basic accommodation there or you can camp there (unpowered site). I will be staying at the Wallangulla Motel in Lightning Ridge. Book your accommodation as soon as possible as it is becoming scarce. Plenty of accommodation available if you are camping.

Some of the activities planned are: Fossicking, visiting art galleries, visiting mines, The Chamber of the Black Hand, swimming in hot springs and did I mention fossicking.

If you are interested in coming on the trip, either email Suzy at suzybrandstater@hotmail.com or call 0414574057



Sapphire

Sapphire is the traditional birthstone for September. Sapphire is the term for Aluminium Oxide (corundum). It is extremely durable and is the second hardest natural substance. It is found in a broad range of colours. Ruby is red or pink corundum, all other colours are called sapphire. Blue is the traditional colour but sapphire can also be clear, green, yellow, gold, purple, peach, colour change or a mix of colours (sometimes called parti, rainbow or bi-coloured). Sapphire is rarer than diamond geologically speaking.



Where does it come from?

Sapphire is formed deep down below the earth's surface, some 65 kilometres down, and comes to the surface in a volcanic explosion in a 'formation tube' or vent. The sapphire comes up at the forefront of a volcanic eruption and is expelled with the pyroclast, or volcanic ash. This is typical for all Australian sapphire occurrences.

If the temperature in this formation tube is hot enough, and the residence time is long enough, the sapphire is clarified, on its journey to the surface. The main contaminant in sapphire is rutile (Iron - Titanium Oxide) and if the temperature/time relationship is sufficient this is volatilised and expelled from the sapphire or it is reabsorbed and reconverted within the crystal.

However, if the temperature is too low, or the rate of travel of the sapphire and pyroclast up the tube too rapid, the sapphire may be left with inclusions such as the "silk" veils which often cloud natural sapphire crystals.

The Thais developed the practice of commercial heat treatment many years ago to remove these silk veils to produce stones of improved clarity and brilliance. This process has always been considered quite acceptable as no chemicals were added, and the holding of the sapphire at high temperatures to bring about this improvement was essentially only mimicking nature and was just finishing off what nature had started.

This information above is from the Australian Sapphire Website

<http://www.australiansapphire.com/> .if you are interested in more information about heat treatment of sapphires go to the website as it has extensive information about different types of treatments

Mineral Data

Chemical Formula: Al_2O_3 , Aluminium Oxide

USES: Gemstone (for high grade material) and abrasive

Main Colours:

blue, green, parti (a mix of colours), yellow, bi-coloured

Rare Colours:

Golden Yellow, orange, apricot, purple, pink, red (Ruby)

The pink to red colour of ruby stems from its chromium content, whereas the sapphire's blue results from its titanium content. Yellow and green sapphires contain variable amounts of ferrous and ferric iron.

INDEX OF REFRACTION: 1.76 - 1.78

BIREFRINGENCE: 0.009

HARDNESS: 9

Lustre is vitreous to adamantine.

Transparency: Crystals are transparent to translucent.

Crystal System is trigonal; bar 3 2/m

Crystal Habits include sapphire's typical six-sided barrel shape that may taper into a pyramid, and ruby's hexagonal prisms and blades.

Specific Gravity is approximately 4.0+

Cleavage is absent, although there is parting which occurs in three directions.

Streak is white.

Other Characteristics: Refractive index is around 1.77; pleochroic (meaning colour intensity is variable from different viewing directions); striations on parting surfaces

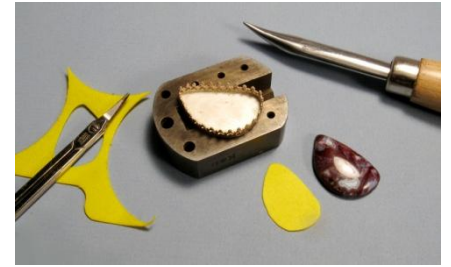


Brad Smith's Bench Tips

Raising A Cabochon

When a cabochon sits too low in a bezel, the bezel hides a lot of the stone. The solution is to either sand down the bezel height or boost up the stone. If you're going to raise it up, question is what is the best material to use ?

I was taught to use fine sawdust but now think that might be a problem when used in rings. I reason that rings will frequently get wet, which would cause the sawdust to swell in size and push the stone against the bezel. Then when the sawdust dries out, the stone would be a little loose.



In any case, I now prefer pieces of plastic sheet to boost up my stones. Pieces are readily available from product packaging or from old credit cards. I just cut a piece to loosely fit the bezel and drop in the stone (with some dental floss) to check its height.

Transparent Cab

When bezel setting a transparent cabochon in silver, I usually cut out the back of the bezel to allow background light to show off the colours and patterns in the stone. If this is not possible or appropriate, I worry that the silver bezel will tarnish under the stone and will ruin its brilliance. What to do?

My solution is one extra step before setting the stone. I place a piece of thin silver Mylar plastic under the stone to act as a mirror that will never tarnish. Mylar is readily available in craft and gift wrap stores, or in a pinch from a party balloon supplier. You may even want to experiment with using colored or patterned Mylar (i.e. diffraction pattern) under some stones.

See all Brad's jewelry books at [Amazon.com/author/BradfordSmith](https://www.amazon.com/author/BradfordSmith)



September (Sapphire) Birthdays

Julie Lenord
Jeffery Belbin
Michael Rafailidis

Kamilla Shepherd
Daniel Blyth
Andrea Bruce

Dorothy Perkins
David Andreou
Elaine Dean

Club 50th Anniversary

Our club is turning 50 this year. We are planning on have a special 50th anniversary dinner on the 26th November. This dinner will be in place of the Christmas party. Please put your name down on the list on the whiteboard if you intending to participate.

Change to club opening hours

A motion was put forward at the August meeting that we stay open an hour longer on the first Saturday of the month. This means that people can come for the general meeting and still have enough time after the meeting to get some work done. The Motion was passed with the proviso that there is a duty officer available

August Workshop Wire Wrapping a Cabochon



Open Day Saturday - 15th October

Our open day is fast approaching. After the AGM we will put up a list of jobs that need doing on the day. Please consider what you can do for the club on this day.

Bob Thompson

Thank you to those people who are able to help support our club patron Bob Thompson on Saturday 10th September. We will be handing out How to Vote Flyers at Leumeah Salvation Army. Cameron will be there throughout the day as our main coordinator, so anyone extra who can help in the middle of the day to give him a break or company, will be welcome.

What's On

Events are generally from the Gem and Lapidary Council of NSW

<http://www.gemlapidarycouncilnsw.org.au/events.html>

Other contributions can be made via email to the club ctownlapidaryclub@bigpond.com.

We are grateful for any submissions

WHEN	WHAT	WHERE
3rd September	Campbelltown Districts Lapidary Club AGM Come along to our annual general meeting. After the meeting there will be a free sausage sizzle . This is a good chance to catch up with old friends. 9.00am will be our monthly meeting. After a short tea and coffee break we will commence the AGM	Lot 1 Bensley Rd Macquarie Fields
2 – 4 September 2016	Gem & Bead Show	Castle Hill Showgrounds, NSW
24 September 2016	Hunter Valley Gemmology Club Open Day	Clubhouse, Maize St, East Maitland, NSW http://www.hvgc.asn.au/
1-3 October 2016	GEMKHANA 2016 The Annual Gem & Mineral Show and Competition of lapidaries from all over NSW, will be presented by the Lapidary Council of NSW Inc	Hawkesbury Showground, Racecourse Road, Clarendon NSW 2756 over the Labour Day Weekend 1-3 October 2016 9am to 5pm Saturday and Sunday, and 9am to midday on Monday.
8th to 9th October 2016	Gem and Mineral Festival Saturday, 8th October, 2016 from 9am to 5pm and Sunday, 9th October, 2016 from 9am to 4pm by Central Coast Lapidary Club	Mingara Club, Tumby Umbi. For further details please phone 02 4362 2246. Festival organizer is Rob Scott phone number 0405 904 881
14-21 October 2016	Inverell Gem & Craft Show	Various locations around Inverell, NSW https://sites.google.com/site/inverellsrocksandgems
15th October 2016	Campbelltown & District Lapidary Club Open Day Open Day on the 15th October and we will be open from 9am to 2pm.	This day will be held in our club rooms and grounds at Lot 1 Bensley Rd. Macquarie Fields
Friday 28 to Sunday 30 October 2016	Gem and Lapidary Exhibition Beecroft. Northern Districts Lapidary Club Gem Show –	Beecroft Community Centre, Beecroft http://ndlapiary.org.au/gem-show-at-beecroft/
Saturday 29 – Sunday 30 October 2016	Spring Gemcraft & Mineral Show	Saturday 29 – Sunday 30 October from 10am to 5pm at Mallee Pavilion, EPIC. Entry \$5 adults, \$10 family, \$2 children/concession. 2016 Events Flyer Canberra
<u>Saturday 29 – Sunday 30 October 2016</u>	Come Fossick! The Lapidary Club of NSW in Surry Hills is holding an exhibition day on Saturday the 29th and Sunday the 30th of October from 10am to 4pm. The title of the exhibition is 'Come Fossick!'	Location is 136 Reservoir St, Surry Hills.

Missed out on the last newsletter?

Contact suzybrandstater@hotmail.com and it will be emailed to you.