

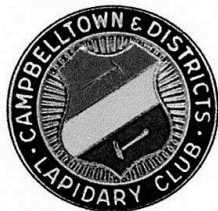
Rockgrinders Gazette

Campbelltown & Districts Lapidary Club Inc.

MAIL: PO Box 477 Ingleburn NSW 1890

PHONE: (02) 9618 3206

General Meetings are held on the
1st Saturday each month except January
Commencing at 9.30am



ADDRESS: Lot 1 Bensley Road Macquarie Fields NSW 2564

Mon 9-2pm Wed 9-2pm Fri 6-9pm Sat 10-1pm

Web Site: campbelltownlapidary.cjb.net

MARCH 2012

Club Report

Our Club Open Day & Sausage Sizzle. We hope all members will help with the cleanup & preparation & attend on the 31st March with as many friends & relatives as they can. For new members the day is relaxed & it is a good time to meet other members and find out more about your club. If you haven't yet picked up your flyers to hand out please do so now, you will find them on the sign in table.

BINGARA FIELD TRIP: This trip will be approx 5 days in Bingara from Sunday 15th April to Thursday 19th April 2012. This is in the school holidays to allow for families to attend but it is after the Easter break (6th – 9th April). You will have to make your own bookings & way there. For Accommodation see the Bingara Riverside Caravan Park (run by the Gwydir Council) at this web site www.bingara.com.au

This n That.....

We now have a second operating faceting machine ready to go thanks to Dieter & Ron.

Thank you also to Betty for making a new front cover for the washbasin & also for washing our dirty tea towels & hand towels.

We also have several new Jacaranda Trees (donated by Charlie) and planted by several members of our club.

It is very easy to forget to clean up your workspace when finished & it is even easier to forget to turn off the water & power when leaving the wheels. As our club is voluntary it would be a good idea for each of us to pinch ourselves occasionally to remember that we are the only ones available to keep our club clean, safe & tidy. A big thank you to all members who go out of their way to do that little bit extra.

Workshops

Commence at 9.30 on the fourth Saturday of the month unless otherwise notified. If you wish to use precious metals for larger items (eg bracelet) please book & pay a non-refundable deposit of \$30 towards the purchase of your materials. The final cost will be calculated on the day. Workshop activities require *member only* use of mechanical tools including the kiln.

Our Bezel workshop was very popular, with a few new ideas that will enhance our gemstones. Thank you to Kathy for organising it & for her training on the day.

Jewellery Workshop Calendar

March	Due to Open Day no workshop
April 28 th	Polymer Clay jewellery making

SILVER CASTING: Our next investment will be on the 16th March as Barry & Dorothy will be attending Minerama at Glen Innes on the 9th.

Diary Dates Our main future events

- 31st March club open day & Sausage Sizzle
- 15th to 19th April Bingara Field Trip
- 21st to 22nd July Annual Gem, Mineral & Jewellery Exhibition

NOTE: The 2012 GEMBOREE will be held on the 6th April in Bundaberg for those who are going to Bingara and would like an extended trip.

PLEASE: help to distribute our flyers for our open day

Membership

Are you a paid up member?

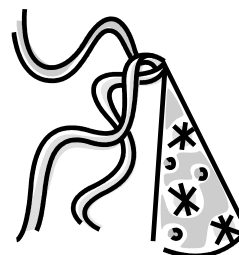
Single	\$15.00	Family	\$20.00	
Pensioner Family			\$15.00	renew each July
Pensioners/Single/Student			\$10.00	
Insurance			\$3.50	per member

NOTE: You must be an insured member over 12 years of age to use machinery, & cutting implements.
Members must not use machinery prior to training.
All visitors are welcome however only members can use machines or gas.

MARCH BIRTHDAYS

Grace Pakulski
Robert Pakulski
Stan Soldo
Matthew Thompson
Cameron Jones
Millie Singleton

AQUAMARINE



NOTE: from the 31st March Insurance will be \$3.50 per member

Smile awhile

The Dark Sucker Theory

For years, it has been believed that electric light bulbs emit light, but recent information has proven otherwise. Electric bulbs DO NOT emit light. They suck dark. Thus we call these bulbs Dark Suckers.

The Dark Sucker theory and the existence of the Dark Suckers prove that dark has mass and is heavier than light. First, the basis of the Dark Sucker theory is that electric light bulbs suck dark. For example, take the Dark Sucker in the room that you are in. There is much less dark right next to it than there is elsewhere. The larger the Dark Sucker, the greater its capacity to suck dark.

Dark Suckers in the parking lot have a much greater capacity to suck dark than the ones in your room. As with all things, Dark Suckers don't last forever. Once they are full of dark, they can no longer suck. This is proved by the black spot on a full Dark Sucker.

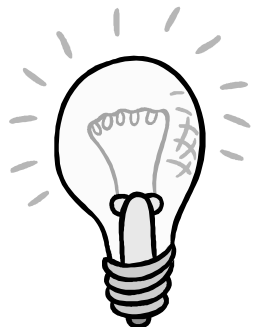
A candle is a primitive Dark Sucker. A new candle has a white wick. After the first use, you can see that the wick turns black, showing all the dark that has been sucked into it. If you place an object next to the wick of an operating candle, it will turn black. This is because it got in the way of the dark flowing into the candle. One of the disadvantages of these primitive Dark Suckers is their limited range.

There are also portable Dark Suckers. In these, the bulbs cannot handle all of the dark by themselves and must be aided by Dark Storage Units. When a Dark Storage Unit is full of dark, it must be either emptied or replaced before the portable Dark Sucker can operate again. Dark has mass. When it goes into a Dark Sucker, friction from the moving mass generates heat. Thus it is not wise to touch an operating Dark Sucker.

Candles present a special problem, as the mass must travel into a thin solid wick instead of through clear glass. This generates a great amount of heat and is therefore even less smart to touch an operating candle.

Also, dark is heavier than light. If you were to slowly swim just below the surface of a lake, you would see a lot of light. As you swim deeper and deeper, it gets darker and darker. When you get real deep, you will be in total darkness. This is because the heavier dark sinks to the bottom of the lake and the lighter light floats to the top. This is why it is called light.

Finally, we must prove that dark is faster than light. If you were to stand in a well lit room in front of a closed closet full of dark and slowly open the door, you will see the light slowly enter the closet. But since dark is so fast, you will not be able to see the dark leave the closet.



So next time you see an electric bulb, remember, it is a DARK SUCKER!!

Recipe

VANILLA CHEESECAKE

BASE:

$\frac{1}{3}$ cup desiccated coconut
 $\frac{3}{4}$ cup plain flour
 $\frac{1}{4}$ cup caster sugar
90g butter, chopped

CHEESECAKE

$\frac{1}{2}$ tablespoons cornflour
 $\frac{1}{2}$ tablespoons water
330g cream cheese, softened
500g ricotta cheese
4 eggs
1 cup caster sugar
 $\frac{1}{2}$ teaspoon vanilla extract

raspberries and icing sugar, to serve

Preheat oven to 150°C. To make the base, place the coconut, flour, sugar and butter in a bowl. Rub the mixture with your fingertips until rough dough forms. Spoon into the base of a lightly greased 20cm-round springform tin lined with non-stick baking paper and press down using the back of a spoon. Bake for 20-25 minutes or until golden. Set aside.

Mix to combine the cornflour and water until a smooth paste forms. Place the cream cheese, ricotta, eggs, caster sugar, vanilla and cornflour mixture in a food processor and process until smooth.

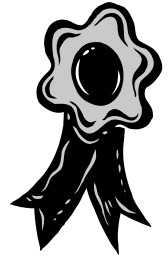
Spoon the filling into the tin and tap lightly to remove any air bubbles. Bake for 1 hour. Turn off the oven and allow the cake to cool in the closed oven for 1 hour. Refrigerate until chilled.

Top with raspberries and dust with icing sugar to serve
Serves 8-10. *Donna Hay*



STORAGE HINTS:

- Use a small concertina photo holder to store your cut up sanding papers.
- Use old film containers to store your small pieces of silver solder.
- Remember to label



Dates to Remember are generally from the Gem and Lapidary Council of NSW. Contributions can be made via email or regular Post to the Editor. We are grateful for any submissions.

2012		
3rd March	Central Coast Lapidary Club - Annual Rock Auction	
Sun 4th March	Newcastle Lapidary Club Rock Auction	
3rd & 4th March	Back From Tucson 9.30 - 5.00 52 MacPherson rd Londonderry NSW	02 9412333150 or 45725812
Sun 4th March	Lapidary Club of NSW Open Day & Activities	10am - 4pm Clubroom 136 Reservoir Road Surry Hills NSW
March 8 th - 11th	Craft & Sewing Show 10am - 4.30pm Free Parking	Rosehill Gardens Racecourse
9th 10th & 11th March	Minerama - Glen Innes This annual fossicking and gem show is held at Glen Innes & District Services Club following through the carpark into King George Oval. There will be field trips on the Friday and Saturday.	More information is available at www.minerama.com.au or you can contact Alison Wood on 02 67 32 1599
9 th - 11 th March	Mind Body & Soul expo Friday 12pm-7pm Sat & Sun 10am - 5pm	Hunts Comfort Inn Crossroads
17 th March	Ingleburn Alive	Ingleburn
17 th March	St. Patrick's Day (sew your sweet peas)	
Sat 17 March	New England Lapidary and Fossicking Club Inc 9am - 4pm Free Entry	Armidale Showground
31st March	Campbelltown Club Open Day & Sausage Sizzle Club	Bensley Rd Macquarie Fields
24 - 25 March	Canberra Lapidary Club Rock Swap www.canberralapidary.org.au/ 8.30am - 5pm	EPIC (Exhibition Park off the Federal Highway, Canberra)
April 6 th - 9 th	2012 GEMBOREE 6 April	QCGA Bundaberg
April 15th - 19th	Campbelltown 5 day Field Trip to Bingara (See notice board) Make your own Booking	Commencing at Bingara.
May 19 th - 20 th	Lismore GEMFEST	Lismore Showground
June 2 nd - 3 rd	Canberra Winter Gemcraft & Mineral Show 10am - 5pm	Parkes Room, Exhibition Hall
June 13 th - 17th	Craft & Quilt Fair	Darling Harbour
July 21st & 22nd 2012	Campbelltown Lapidary Club Annual Gem Show & Exhibition Ingleburn Community Centre	Cnr Oxford Rd & Cumberland Rd Ingleburn
September 7 th - 9th	Bead & Gem Show New Venue	Canterbury Racecourse
Sept 29 th - 1 st Oct	GEMKHANA NSW State Gem Major Exhibition - Lapidary, Gems, Minerals & Artists at work.	Mudgee Showground
Oct 26 th - 28 th	Northern districts lapidary club - gem show Community Centre	Beecroft Rd Beecroft
November 3 rd -4 th	Canberra Spring Gemcraft & Mineral Show 10am - 5pm www.canberralapidary.org.au/	Parkes Room, Exhibition Park
MARCH 27, 2013	GEMBOREE South Australia	

Dates to Remember	Generally come from the Gem and Lapidary Council web site, http://www.gemlapidarycouncilnsw.org.au , if mistakes please let us know as soon as possible so we can correct item, your submissions will be gratefully accepted. Please check this website yourself for late additions. Thank you Margaret	*All workshops may change due to unforeseen circumstances; deposits given may be transferred to another workshop.
--------------------------	--	---

Extra bits

NOTE: The 2012 GEMBOREE will be held on the 6th April in Bundaberg Qld.

WEB SITES: These have some interesting "How To" videos, worth a look, Thank you Ron for the info.

<http://www.blackopaldirect.com/page/lightning-ridge/roughing-a-black-opal-nobby/>

<http://www.blackopaldirect.com/page/lightning-ridge/slicing-opal-more-in-depth/>

<http://www.blackopaldirect.com/page/lightning-ridge/how-to-make-a-doublet-by-black-opal-direct/>

More on: <http://www.blackopaldirect.com/sitemap.php>

WELCOME: To all new members, we trust you will enjoy your experiences with us & if you have any questions just ask our members would love to help you if they can.

This is our club newsletter and it only exists for members to be kept up to date & for members to give other members ideas of where & what they can do & buy. So if you have anything you would like to pass on please let me know & I will do my best to put it into print for you.

